


**Lancaster County
Long-Term Care Facility
Connection**

PowerPoint copies at:
<https://www.nehca.org/lancaster/>

Agenda

- Follow-up from last connection
- Topics
 - Testing
 - BinaxNOW cards
 - Reporting
 - CLIA reporting for NF and AL
 - Phasing
 - LLCHD spreadsheet
 - PPE
 - State stockpile

Lincoln- Lancaster County Health Dept. Contacts

- Infectious/Communicable Disease – **Tim Timmons at 402-441-8056**
 - TestNebraska, other testing sites and miscellaneous – **Charlotte Burke at 402-441-7071**
 - Unsure of question category – **Charlotte Burke at 402-441-7071** – she will route question to the relevant person
- 

**Who to
contact
with
Phasing
Questions?**

Call Lincoln-Lancaster County
Communicable Disease number at
402-441-8053

Can ask for Angie or Amy

After business hours call 402-441-
8000 and ask for the Communicable
Disease on-call person

Phase III General Distribution of PRF

- An additional \$20 billion is allocated for this Phase III General Distribution
- Providers should apply early
- Open to all provider types
- Even those providers who received funding previously may be newly eligible for consideration
- Applications accepted from Oct. 5, through Nov. 6
- HHS will use the remainder of the \$20 billion (after ensuring all applicants have received 2% of annual patient care revenue) to calculate an “equitable add-on payment” for all applicants
- Portal is open at: <https://www.hhs.gov/coronavirus/cares-act-provider-relief-fund/for-providers/index.html>
- Phase III webinar on **Oct. 15 at 2:00pm CT:**
https://webex.webcasts.com/starthere.jsp?ei=1383312&tp_key=1ef02d4bb2



HHS PRF FAQ with Phase III Information

- HHS recently updated the [Provider Relief Fund \(PRF\) FAQs](#) to include Phase 3 information
- Updates include:
 - Support for providers missing PRF dollars;
 - Phase 3 methodology/formula overview;
 - Eligibility and receipt of other funding;
 - Value-based purchasing and PRF; and
 - Infection control and current staff.

CMS Guidance on Repayment of Medicare Advance Payment

- CMS [released](#) updated Medicare Accelerated and Advance Payment guidance outlining the repayment schedule:
- Repayment begins one year from the date the payment was issued;
- Over that year, Medicare payments will be recouped at a rate of 25 percent;
- After that, Medicare payments will be recouped at a rate of 50 percent for another six months; and then a letter for any remaining balance will be issued.
- SNFs can submit one or more lump sum payments to pay off all or some of their total balance
- Contact [Wisconsin Physician Services](#) for info on how to make a lump sum payment
- CMS' Factsheet is [HERE](#) and FAQ [HERE](#).

Applying for a CLIA Waiver

- [CMS116 Form](#), Complete sections I-VI and IX-X
 - The name and signature of the “Owner/Director of Laboratory” on page 5 should match the “Name of the Director” on page 1.
 - Confirm the facility’s Federal Tax Identification Number is accurate – it should be 9 digits.
 - Make sure to include an email and phone number to contact in case of questions.
- [CLIA Ownership Information Form](#)
- [List of Tests Performed](#)
 - Test - The name of the test (**example:** COVID-19 test)
 - Method – Instrument Name (**example:** Abbott BinaxNOW AG cards, BD Veritor analyzer)
 - Specialty – Approved for waived certificate (**example:** antigen tests)

Scan and email the completed forms to the DHHS office for processing at: DHHS.AcuteCareFacilities@nebraska.gov

If questions, call DHHS CLIA support at 402-471-4363.

HHS recently posted information on [COVID-19 Rapid Point of Care Testing](#), including the Abbott BinaxNOW Test Fact Sheet, CMS’ CLIA Guidance, Reporting Guidance and training videos and FAQs

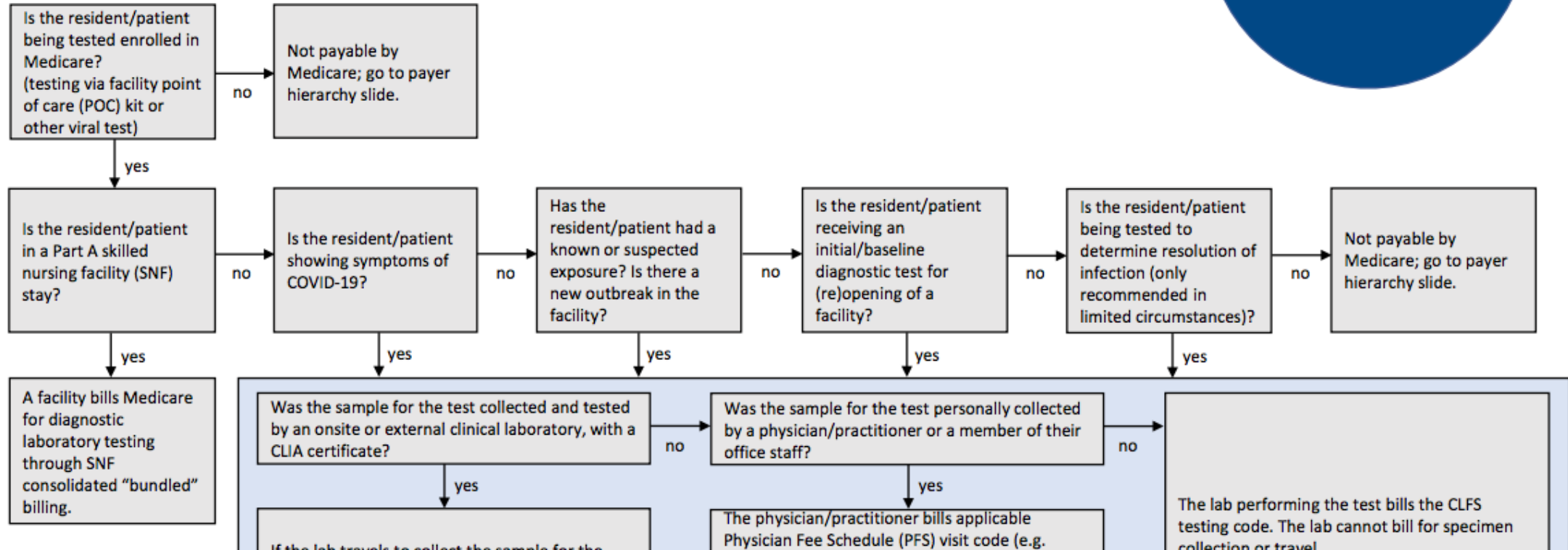
CLIA Test Reporting

- To perform COVID testing on-site, a facility must have a CLIA Waiver
- Test results must be reported to DHHS within 24 hours
- Use DHHS' [reporting spreadsheet \(.xlsx download\)](#)
- DHHS' [Implementation Guide](#)
- Open and re-encrypt the spreadsheet before sending to DHHS using password: **report2020**
- Send to DHHS.Epi@nebraska
- For questions: Connie Ganz at connie.ganz@nebraska.gov or 402-471-0147

CMS Coverage and Payment for COVID-19 Testing [flow chart](#)



MEDICARE PAYMENT FOR COVID-19 VIRAL TESTING: Skilled Nursing Facility/Nursing Facility



Abbott BinaxNOW Antigen Test Cards

- For Abbott training videos and documents, please visit the [BinaxNOW™ COVID-19 Ag Card and NAVICA™ App Set-Up and Training portal](#)
- For questions regarding the status of your shipment please contact Abbott at ARDxUSGovernmentSupport@abbott.com or 1-877-441-7440 or email HHS at hhsbinax@hhs.gov
- The HHS' [website](#) for BinaxNOW distribution is live

NE DHHS Clarification on Testing, PPE and Visitation

- DHHS working on a playbook for distribution of the 38,000 Abbott BinaxNOW test cards/week
- Future card shipments will be delivered via local health departments
- At this point in time, ALFs are not required to perform routine testing
- If an ALF is providing testing, then the results must be reported in 24 hours
- DHHS has a large supply of certain PPE, continue to submit your requests using LLCHD's [form](#)
- NFs should base their routine testing frequency on the color code for their county
- NF visitation should also be based on the county's color code

Flu Vaccination Campaign Resources

CMS Flu Vaccination Campaign Webinar
Friday, October 16th
11am to 12pm CT

<https://cmsfluresourcesandinformationfornebraska.eventbrite.com>

[cms.gov/flu](https://www.cms.gov/flu) – CMS’s flu vaccination information and resources.

[Flu Vaccine Partner Toolkit](#) – with flu and other immunization resources.

[cms.gov/flu-provider](https://www.cms.gov/flu-provider) – for health care providers with flu coverage and billing information